

# NEW JERSEY COMMUNITY RESOURCE CENTERS REDUCE PAROLEE RISK



<b>FACILITY</b> <b>New Jersey Community Resource Centers (CRCs):</b> Atlantic City, Elizabeth, Perth Amboy, Neptune, Vineland	<b>POPULATION</b> Parolees	<b>CUSTOMER</b> New Jersey State Parole Board	<b>TREATMENT LENGTH</b> 90 Days
---	-------------------------------	--	------------------------------------

## PROGRAM SUMMARY

In New Jersey, GEO Reentry Services provides comprehensive treatment programs tailored to meet individual parolee's risk and needs. At the foundation of our treatment is evidence-based programming designed to address criminogenic needs as identified through the assessment process. The model includes the following: Moral Reconciliation Therapy® (MRT), intensive employment program, anger management, life skills, relapse prevention, gang awareness, employment readiness, Thinking for a Change (T4C), and educational testing (TABE). Programming is delivered through group and individual sessions.

## WHY IS A REDUCTION IN THE LSI-R SCORE IMPORTANT?

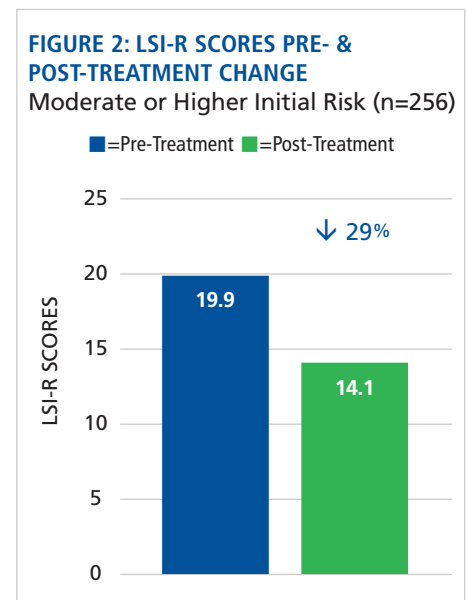
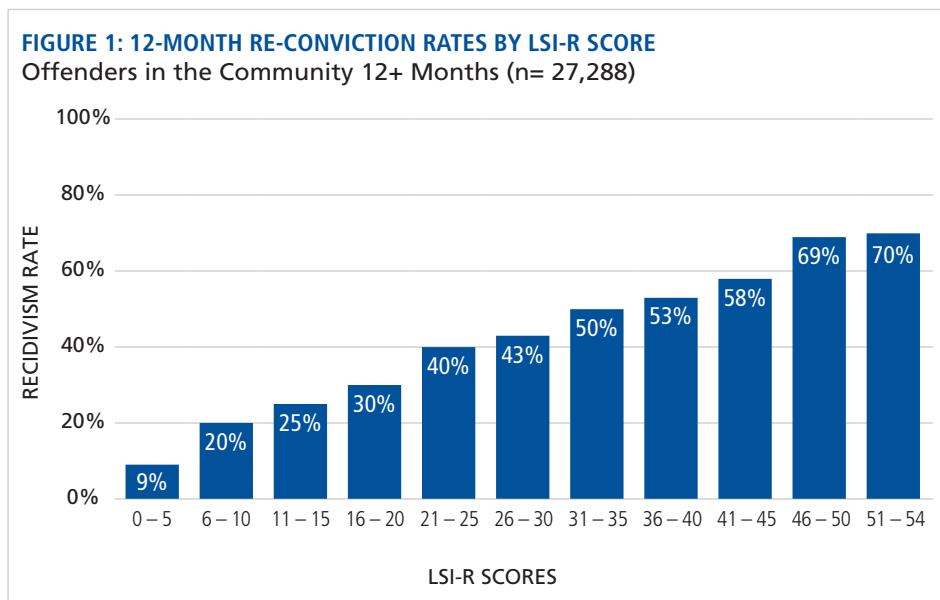
The Level of Service Inventory-Revised (LSI-R) is a risk/needs assessment instrument that is designed to systematically evaluate the participant's current risk and needs; this information is important to treatment planning and assignment to levels of security and supervision.<sup>1</sup> The importance of a reduction in the LSI-R score is that it correlates with a decrease in recidivism, as the LSI-R has been researched extensively. LSI-R assessments are administered as participants enter the program, and again before discharge from the program. GEO Reentry programs deliver treatment to reduce the risk scores, and therefore lower the potential for future recidivism. This potential reduction in recidivism has a positive impact not only on the individuals, but on the entire community.

## SUMMARY OF RESULTS

The evaluators analyzed the pre-treatment and post-treatment LSI-R scores for 256 participants who received programming between January 1, 2019 and December 10, 2019, at one of the five New Jersey CRCs. The figures below illustrate the considerable risk reduction:

- **FIGURE 1** outlines the correlation between LSI-R scores and recidivism rates as a reference.<sup>2</sup>
- **FIGURE 2** shows GEO Reentry CRC program participants with moderate to high-risk scores on intake had an average reduction in risk of 29% (5.8 points).

The results indicate that GEO Reentry CRCs in New Jersey significantly reduced risk scores and helped lower the potential for future recidivism, from **30% to 25%** on average.



**FOR MORE INFORMATION**  
 Matt Wirtner, Area Manager · 704.543.3426 · mwirtner@geogroup.com

<sup>1</sup>Andrews, D.A., Ph.D, Bonta, J.L., Ph.D. (1995). "Level of Service Inventory-Revised, User's Manual"

<sup>2</sup>Andrews, D.A., Ph.D, Bonta, J.L., Ph.D. (2003). "Level of Service Inventory-Revised, U.S. Norms Manual Supplement"